

## Getting Started with IRES for Windows Mobile

Begin by installing and running Pocket Phojo (see <http://www.idruna.com/downloads.html> for instructions).

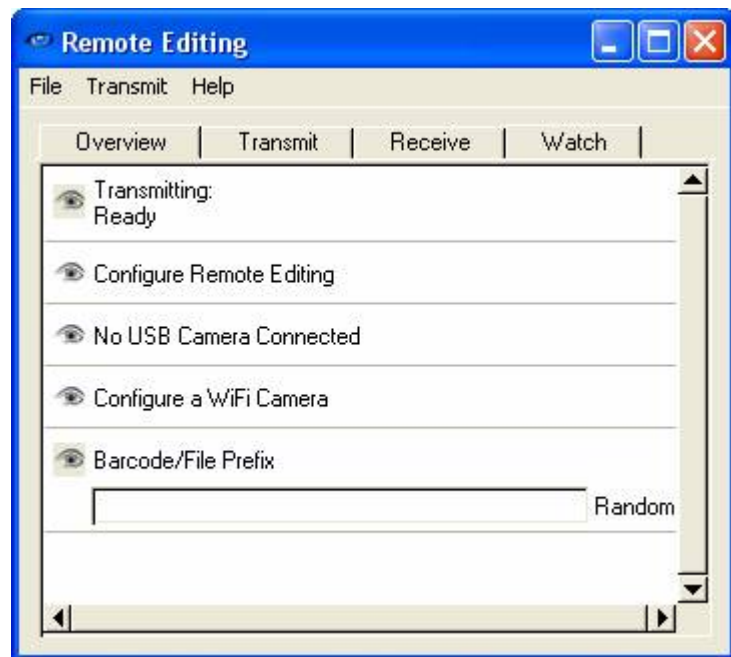
You will be presented with a window telling you that you are on day 1 of your 30 day trial. Press OK to evaluate the software, or enter your registration details if you have purchased the software.

## Enabling the USB Driver

Tap File->Preferences->General and check the Enable USB Driver option if your device has USB Host support and you will be plugging in a camera.

## Overview Tab

The Overview tab displays at a glance status information.



Click/tap on "Configure Remote Editing".

## Remote Editing Options



### Enable Remote Editing

This should be checked.

### Server

This is the Remote Editing server you will be connecting to. If you have your own server, enter it here, otherwise use one of shared servers provided by Idruna. Clicking on the menu arrow to the right will display a list of servers available. Best performance will be achieved if you select the server closest to you, for example uk1.remoteedit.net if you are in Europe, and usa1.remoteedit.net if you are in North America.

### User Name

Enter a user name of your choice that your viewers will use to log on to the system, for example "John Smith".

### Password

Enter a password that your viewers will be required to enter to log on.

### Share Path/Share Camera Folder

With the Windows Mobile version of IRES, you can tell the software to either share all of the images on the camera attached to your computer via USB, a folder, or both the camera and a folder. Sharing the camera is the simplest solution, but advanced users may wish to instead configure a Watch Folder action to download, rename, and process files from the camera, so that the

remote viewers only see files that have been edited or renamed for example. In this case you would share the destination folder and un-check Share Camera Folder.

## **Image Handling Options**

The following options are applied to images when the viewer downloads them. If you wish to batch process images, see the Watch Folders chapter.

### **Process Actions**

This must be checked for the options to add a Caption, Resize the image etc to take effect.

### **Caption**

Tap on the arrow to the right to select and edit existing captions, or create new ones.

### **JPEG Quality**

This determines how much compression will be applied to images. Settings below 55 provide extremely high compression levels, but at the expense of visible artifacts. 70 is a safe level. Settings above 90 give larger, higher quality files, but viewers are unlikely to notice the differences.

### **Saturation**

Increase or decrease saturation.

### **Sharpness**

Increases Sharpness using an Unsharp Mask filter

### **Resize Image**

If checked, the Width and Resolution entered below will be used to reduce or enlarge the image.

### **Width**

This setting is applied before rotation, so if you started with a 3000x2000 image and set the width to 1500, the image would be resized to either 1500x1000 or 1000x1500 depending on if the image was shot in portrait or landscape.

### **Resolution**

If your agency requires it, the image resolution can also be entered.

## **Only Share Tagged Files**

With this option checked, only images that have been tagged (protected) using the controls on the back of the camera will be displayed to the viewer. This gives you control to only show your best images rather than deluge the viewer with the entire take.

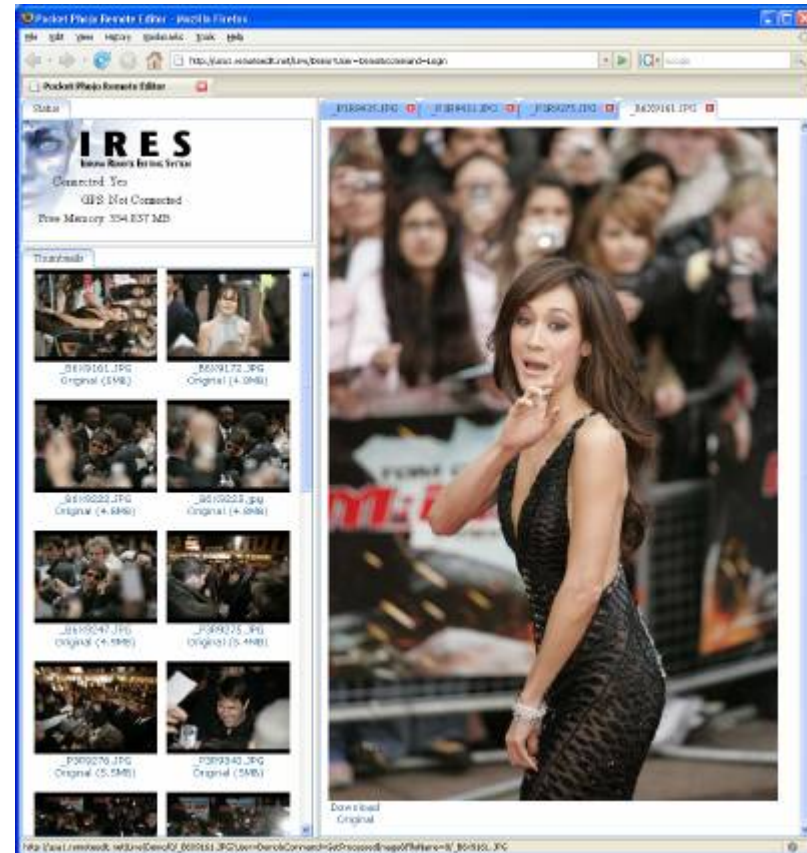
## Logging on Remotely

The viewer logs on to IRES by pointing their web browser to the server you are connected to. For example, if you are connected to [usa1.remoteedit.net](http://usa1.remoteedit.net), the viewer would type <http://usa1.remoteedit.net> into their browser.



The viewer will then need to type in the user name you entered previously, or select it from the drop down list of users, and press Login. A message asking the viewer to enter the username and password will appear. For security, the viewer will have to enter your username again, plus the password you selected previously. The viewer will then be presented with the main IRES page that displays a status panel, a list of thumbnails, and a workspace area for viewing previews.

## Using the Browser



Thumbnails are added in real time as photos are taken, there is no need to press refresh. To arrange how many thumbnails are displayed at once, drag the bar separating the panels. Clicking on a thumbnail opens a preview tab. This allows you to quickly tab between previews to pick the photo you like best. To download the full size image, either click on Download from the preview tab, or on the file name below the thumbnail. You should be asked where you want to save the file to, but if not, right click on the link and select Save As instead.

## Voice Tags

IRES supports voice tags that can be added to images using the controls and microphone on the back of your camera. When you record a voice tag, a play button will appear next to the image in the browser. This allows the photographer to make quick notes for the editor, such as who is being photographed etc.

## Watch Folders

Watch Folders are a powerful way of telling the software how to automate your workflow, and give you an array of alternative options for situations when a remote editor is not available. Under Windows Mobile, when a camera is connected, a virtual folder (visible only to IRES) named /Camera is mounted, allowing you to access the camera like a hard drive. Using Watch Folders, you can automatically download or transmit images via email or FTP as they are taken. By using the protect feature on your Canon camera, you can select which images are to be processed using only the controls on your camera, with no need to touch the computer.

## Examples

### Copying All Images to a Folder

Starting with the camera plugged in, click on the Watch tab, and press Add. Select /Camera as the path, either by typing it in (case sensitive), or clicking on My Computer->Camera under Windows, or My Device->Camera under Windows Mobile. Press OK, and the Transmission Profile settings will appear. Click on the menu to the right of Transmit Via, and select "File Copy". Press Browse, and select the folder to copy the images to. On the Actions tab, "Only Transfer JPEGs" should be unchecked if you want to copy RAW files too. Selecting "Delete Source Files When Finished" will delete the files from the camera once they have been safely copied to the folder.

In the Remote Editing settings, type in the path of the folder the images are being copied to in the field labeled "Share Folder". Turn off "Share Camera" as the images are going to be copied to the hard drive.

### Transmit Press-Ready Images via Email or FTP

On the Transmit Tab, select "FTP" as the Transmit Via option. Enter your FTP server details. If your server is for example [ftp.test.com](http://ftp.test.com), you would enter [ftp.test.com](http://ftp.test.com), not <ftp://ftp.test.com>. You can also enter "Email" as the Transmit Via option if the recipient does not have an FTP server. On the Actions tab, check the option to "Process Actions". Clicking on the menu to the right of "Caption" then selecting "New" will allow you to enter the IPTC captions to be embedded in each image. Setting the "JPEG Quality" option to be between 65 and 75 will increase the compression level of the files to reduce transmission times. Checking the "Resize Image" option and entering a value for the Width field will tell the software to resize each image to further reduce transmission times. Do not select the "Delete Source Files When Finished" option or you will not have an original image to edit if the full size file is ever needed.

## **Using the Protect Button to Select Images**

Canon cameras have either a dedicated Protect button (with a key symbol next to it) that can be pressed when reviewing images on the back of the camera, or have a Protect option that can be accessed via the menu. This feature can be used to tell the software which images you want to be processed. To enable this, select "Only Transfer Tagged Files". Now the actions you have selected will only be triggered for the files you select via the back of the camera. This is a great way of selecting which images to send if you have limited bandwidth and no editor to use Remote Editing with. It can be used with any of the examples above, for example protecting an image could tell the software to send a captioned, resized, and recompressed version of the image to your editor via email.

## **Using a Barcode Scanner to Rename Images**

Configure the Actions tab as per the "Copying All Images to a Folder" example above, but check the "Rename Files" option. The software supports Socket Bluetooth Barcode scanners such as the Cordless Hand Scanner Series 7. All you need to do is install the driver software from Socket, to have the Rename Prefix updated when you scan a barcode. If you don't have a barcode scanner, you can also manually enter values for the Rename Prefix via the Overview tab. The software will remember the exact time you scanned a barcode or manually entered a prefix, so as long as your camera's clock is synchronized with your computer, you can either intentionally or accidentally unplug your camera and still have the files renamed correctly when you plug it back in again.

## **GPS Support**

The Windows Mobile version of the software supports embedding your GPS coordinates into the Exif header of images (the devices with USB Host Support often also have built-in GPS receivers). If GPS Support is enabled by clicking on GPS from the Overview tab, and "Process Actions" option is selected, your coordinates will automatically be embedded as images are processed.

## Supported Cameras under Windows Mobile

- Canon 1D Mark II and Mark II N
- Canon 1Ds Mark II
- Canon 5D
- Canon 20D
- Canon 30D
- Canon Rebel XT and XTi
- Nikon D2X and D2Xs
- Nikon D2H and D2Hs

## Camera Specific Notes

### Canon 30D

Use the Canon 30D's menu options to switch the USB mode from PTP to WFT mode to allow it to work with the USB driver.

### Canon 5D

Use the Canon 5D's menu options to switch the USB mode from PTP to Normal mode to allow it to work with the USB driver.

### Canon 1D Mark II

There are a few caveats you need to be aware of when using the Mark II via USB.

- The Mark II doesn't like to talk to anyone when its buffer is full. If the software suspects the buffer is full, it stops talking to the camera, and displays a message while it waits for the buffer to empty. For best reliability, try to avoid keeping your finger on the shutter for so long that the camera has to write a file to the card before being able to take the next shot.
- Do not format a card while connected, as the camera will lock up. Turn off or unplug the computer first.
- The camera only supports reading files from the card that is currently selected. Pressing the card button to switch between CompactFlash and Secure Digital cards resets the USB connection, and you can no longer read the files on the other card. This appears to be by design.
- Do not connect the camera unless it has a card in it, or the camera locks up.
- Don't allow the software to display RAW files via File->Open
- Unfortunately these problems lie in the camera's firmware, so we can't work around them. If you do manage to lock the camera up, remove the battery to clear the problem.

## All Nikon Cameras

The display turns off on the back of the camera when connected. We are looking forward to a fix from Nikon!