

Getting Started with IRES for Windows XP/Vista

Begin by installing and running IRES (see <http://www.idruna.com/downloads.html> for instructions).

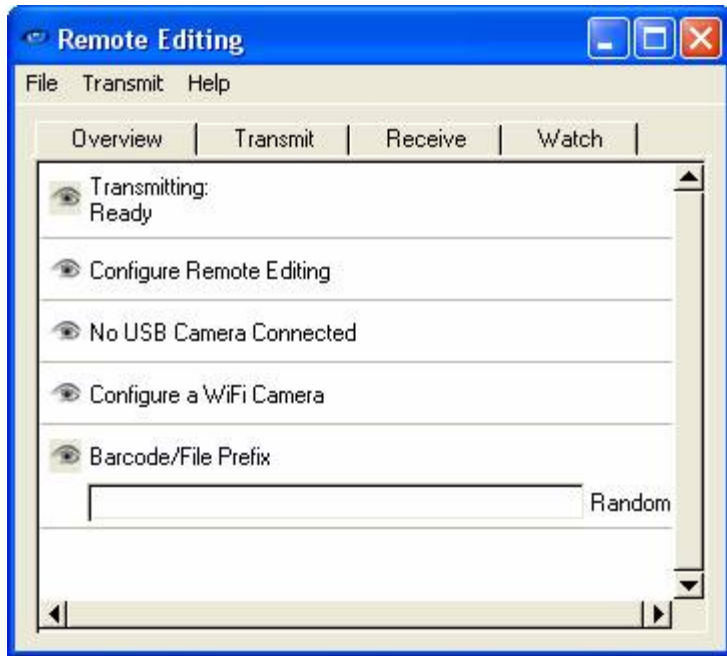
You will be presented with a window telling you that you are on day 1 of your 30 day trial. Press OK to evaluate the software, or enter your registration details if you have purchased the software.

Connecting the Camera

IRES uses Canon's SDK to connect to your camera via FireWire or USB as applicable. Nikon and other camera users must use the software that comes with their camera to download the images to a folder, then set the Share Folder in the IRES settings to the same folder. See Supported Cameras and Camera Specific Notes below for more information.

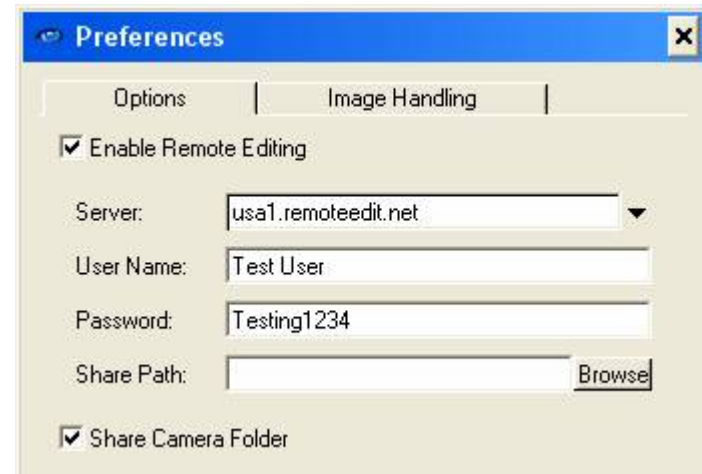
Overview Tab

The Overview tab displays at a glance status information.



Click on "Configure Remote Editing".

Remote Editing Options



Enable Remote Editing

This should be checked.

Server

This is the Remote Editing server you will be connecting to. If you have your own server, enter it here, otherwise use one of shared servers provided by Idruna. Clicking on the menu arrow to the right will display a list of servers available. Best performance will be achieved if you select the server closest to you, for example uk1.remoteedit.net if you are in Europe, and usa1.remoteedit.net if you are in North America.

User Name

Enter a user name of your choice that your viewers will use to log on to the system, for example "John Smith".

Password

Enter a password that your viewers will be required to enter to log on.

Share Path

Under Windows XP/Vista, the Share Path you choose will be used to download images from the camera as you shoot. If you are using a non-Canon Camera, use the camera's software to download images to a folder, then set the Share Path to the same folder.

Image Handling Options

The following options are applied to images when the viewer downloads them. If you wish to batch process images, see the Watch Folders chapter.

Process Actions

This must be checked for the options to add a Caption, Resize the image etc to take effect.

Caption

Tap on the arrow to the right to select and edit existing captions, or create new ones.

JPEG Quality

This determines how much compression will be applied to images. Settings below 55 provide extremely high compression levels, but at the expense of visible artifacts. 70 is a safe level. Settings above 90 give larger, higher quality files, but viewers are unlikely to notice the differences.

Saturation

Increase or decrease saturation.

Sharpness

Increases Sharpness using an Unsharp Mask filter

Resize Image

If checked, the Width and Resolution entered below will be used to reduce or enlarge the image.

Width

This setting is applied before rotation, so if you started with a 3000x2000 image and set the width to 1500, the image would be resized to either 1500x1000 or 1000x1500 depending on if the image was shot in portrait or landscape.

Resolution

If your agency requires it, the image resolution can also be entered.

Only Share Tagged Files

With this option checked, only images that have been tagged (protected) using the controls on the back of the camera will be displayed to the viewer. This

gives you control to only show your best images rather than deluge the viewer with the entire take. Note that IRES will see if you have tagged an image even if it has already been downloaded.

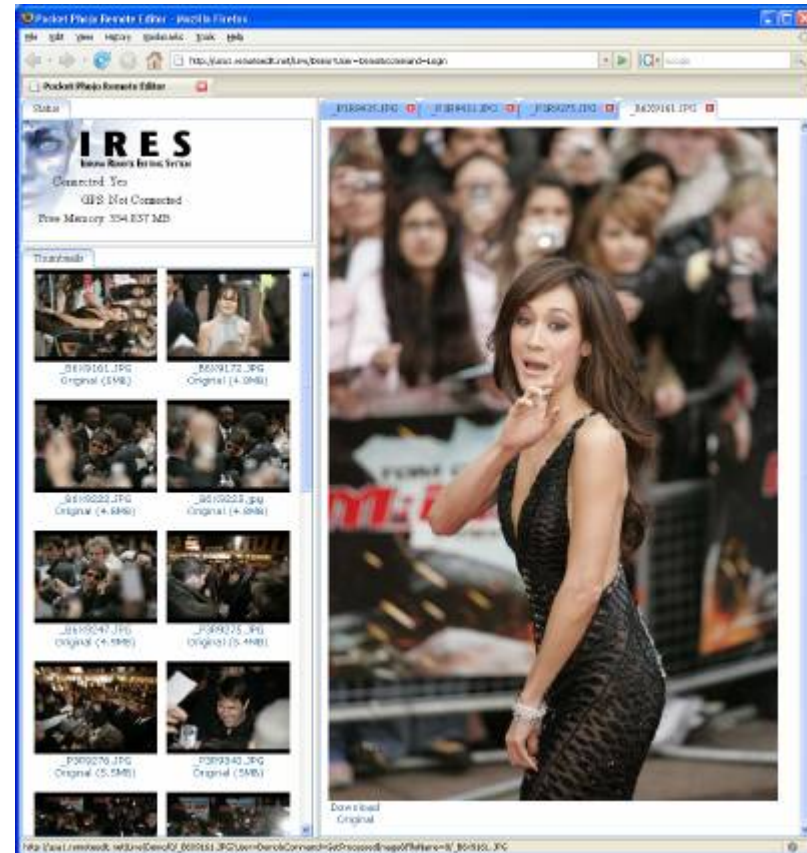
Logging on Remotely

The viewer logs on to IRES by pointing their web browser to the server you are connected to. For example, if you are connected to usa1.remoteedit.net, the viewer would type <http://usa1.remoteedit.net> into their browser.



The viewer will then need to type in the user name you entered previously, or select it from the drop down list of users, and press Login. A message asking the viewer to enter the username and password will appear. For security, the viewer will have to enter your username again, plus the password you selected previously. The viewer will then be presented with the main IRES page that displays a status panel, a list of thumbnails, and a workspace area for viewing previews.

Using the Browser



Thumbnails are added in real time as photos are taken, there is no need to press refresh. To arrange how many thumbnails are displayed at once, drag the bar separating the panels. Clicking on a thumbnail opens a preview tab. This allows you to quickly tab between previews to pick the photo you like best. To download the full size image, either click on Download from the preview tab, or on the file name below the thumbnail. You should be asked where you want to save the file to, but if not, right click on the link and select Save As instead.

Voice Tags

IRES supports voice tags that can be added to images using the controls and microphone on the back of your camera. When you record a voice tag, a play button will appear next to the image in the browser. This allows the photographer to make quick notes for the editor, such as who is being photographed etc.

Watch Folders

Watch Folders are a powerful way of telling the software how to automate your workflow, and give you an array of alternative options for situations when a remote editor is not available. Using Watch Folders, you can automatically download or transmit images via email or FTP as they are taken. By using the protect feature on your Canon camera, you can select which images are to be processed using only the controls on your camera, with no need to touch the computer.

Examples

Copying Images from a Card Reader

Click on the Watch tab, and press Add. Select the drive letter used by your card reader as the path. Press OK, and the Transmission Profile settings will appear. Click on the menu to the right of Transmit Via, and select "File Copy". Press Browse, and select the folder to copy the images to (usually the same folder you entered as the Share Path). On the Actions tab, "Only Transfer JPEGs" should be unchecked if you want to copy RAW files too. Selecting "Delete Source Files When Finished" will delete the files from the camera once they have been safely copied to the folder.

Transmit Press-Ready Images via Email or FTP

On the Transmit Tab, select "FTP" as the Transmit Via option. Enter your FTP server details. If your server is for example <ftp.test.com>, you would enter <ftp.test.com>, not <ftp://ftp.test.com>. You can also enter "Email" as the Transmit Via option if the recipient does not have an FTP server. On the Actions tab, check the option to "Process Actions". Clicking on the menu to the right of "Caption" then selecting "New" will allow you to enter the IPTC captions to be embedded in each image. Setting the "JPEG Quality" option to be between 65 and 75 will increase the compression level of the files to reduce transmission times. Checking the "Resize Image" option and entering a value for the Width field will tell the software to resize each image to further reduce transmission times. Do not select the "Delete Source Files When Finished" option or you will not have an original image to edit if the full size file is ever needed.

Using the Protect Button to Select Images

Canon cameras have either a dedicated Protect button (with a key symbol next to it) that can be pressed when reviewing images on the back of the camera, or have a Protect option that can be accessed via the menu. This feature can be used to tell the software which images you want to be processed. To enable this, select "Only Transfer Tagged Files". Now the actions you have selected will

only be triggered for the files you select via the back of the camera. This is a great way of selecting which images to send if you have limited bandwidth and no editor to use Remote Editing with. It can be used with any of the examples above, for example protecting an image could tell the software to send a captioned, resized, and recompressed version of the image to your editor via email.

Using a Barcode Scanner to Rename Images

Configure the Actions tab as per the "Copying All Images to a Folder" example above, but check the "Rename Files" option. The software supports Socket Bluetooth Barcode scanners such as the Cordless Hand Scanner Series 7. All you need to do is install the driver software from Socket, to have the Rename Prefix updated when you scan a barcode. If you don't have a barcode scanner, you can also manually enter values for the Rename Prefix via the Overview tab. The software will remember the exact time you scanned a barcode or manually entered a prefix, so you can either intentionally or accidentally unplug your camera and still have the files renamed correctly when you plug it back in again.

GPS Support

Only the Windows Mobile version of the software supports embedding your GPS coordinates into the Exif header of images, please email us if you require this feature under Windows.

Supported Cameras under Windows XP/Vista

- Canon 1D Mark III
- Canon 1D Mark II and Mark II N
- Canon 1Ds
- Canon 1Ds Mark II
- Canon 5D
- Canon 20D
- Canon 30D
- Canon Rebel XT and XTi
- Any other camera that has software to download images as you shoot.

Camera Specific Notes

Canon 30D

Use the Canon 30D's menu options to switch the USB mode from PTP to WFT mode to allow it to work with the USB driver.

Canon 5D

Use the Canon 5D's menu options to switch the USB mode from PTP to Normal mode to allow it to work with the USB driver.

All Nikon Cameras

The display turns off on the back of the camera when connected. We are looking forward to a fix from Nikon!

Disabling the Windows "Camera Connected" Window

By default, Windows pops up a "Camera Connected" window when you plug a camera in. You can get rid of this by selecting IRES as the default action and checking the "Always use this action" option on the window that appears. You can also change this setting by going to Start Menu->Control Panel->Scanners and Cameras, right clicking on the camera (make sure the camera is plugged in), selecting Properties, clicking on the Events tab, and selecting "Take No Action" as the default action.